

# PATHWAY THROUGH THE BIBLE PARK



## NOAH'S ARK ENTRY

The ark will be the entry point to the Pathway through the Bible Park as a Welcome Center.



## FISHING BOAT

The fishing boat will help bring to life the story of Jesus' disciples specifically in Matthew 4:19, "Follow Me", Jesus said, "and I will make you fishers of men."



## MAKE A JOYFUL NOISE

The station will contain outdoor stationary instruments that the kids can play and "make a joyful noise unto the Lord" as it tells us in Psalm 100.



## JONAH AND THE WHALE

Kids can get a sense of the whale that Jonah was swallowed up by in Jonah 1:9-2:10 and how the whale spit Jonah out onto dry ground as the kids slide out of the whale's mouth.



## JOSHUA AND THE BATTLE OF JERICHO

The rock fort will help tell the story of Joshua 6:1-27 where Joshua and his army marched around the city of Jericho for seven days as the Lord commanded and the Lord delivered Jericho into their hands.



## SAMARITAN WOMAN AT THE WELL

John 4 talks about the woman at the well that Jesus asked to give Him a drink. This is a great place to tell children, as well as adults, about Jesus who gives Living Water.



## 10 COMMANDMENTS

This will be a scavenger hunt for kids to try and find all 10 while learning the commandments God revealed to Moses in Exodus 20:1-17.



## DANIEL AND THE LION'S DEN

Lion figures will portray Daniel's story in Daniel 6:16-23.



## OUTDOOR SEATING

A few picnic tables will be located throughout the park.

## WHAT?

*Pathway through the Bible Park* is hands-on Bible exploration which creates a pathway to engage curious minds in learning.



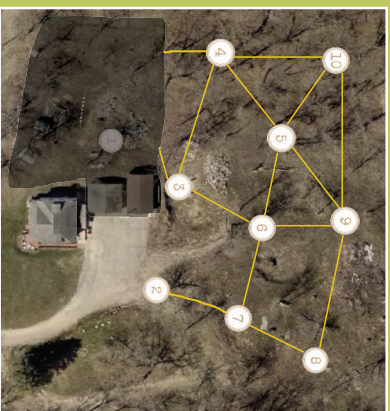
## WHY?

The Pathway will give all an opportunity to enjoy family/friends as they explore faith through a wide variety of experiences which will include themed areas with scavenger hunts. A few of the themes are Noah's Ark, Daniel and the lion's den, Jonah and the whale, the Woman at the well and many more.

## HOW CAN I HELP?

**Call for info or to help (320) 491-1851.**

The support given to build this park will be a tremendous help as our community looks to grow in its faith. Titus 2 will continue to grow and fulfill its mission to bring H.O.P.E. to our community.



- 1-Parking lot
- 2-Noah's Ark
- 3-Samaritan woman & well
- 4-Jonah & the whale
- 5-Make a joyful noise
- 6-Train up your children
- 7-Daniel & lion's den
- 8-Joshua & battle of Jericho
- 9-Cross/benches
- 10-Fishing boat

Benches & picnic tables

Scavenger hunts:  
10 commandments  
Fruit of the Spirit

Tentative design

Hands-on Bible exploration creates a pathway to engage curious young minds in learning, and Titus 2 Ministries is creating just that pathway. We call it *Pathway through the Bible Park*. Located on a majestic 3 acres of Minnesota countryside, the Pathway will give young and old an opportunity to explore faith through a wide variety of experiences which will include Noah's Ark, Daniel and the lion's den, Jonah and the whale, the Woman at the well and many more. The opportunity to explore faith through the exploration of a pathway of activities is the goal.

*Pathway*  
*through*  
**the**  
**BIBLE**  
*Park*

Time, talent and funds are always needed. We ask you to find a way to help us achieve the goal.